

# Materials

Prodotti realizzati su misura. Da sempre la massima personalizzazione delle finiture è uno dei punti di forza della nostra collezione. Tutti i prodotti infatti sono disponibili in molteplici finiture dei fusti in legno mentre i rivestimenti possono essere realizzati con materiali diversi per composizione e colorazione.

In questo catalogo troverete una raccolta di finiture e rivestimenti accuratamente selezionati per garantirvi il massimo livello di personalizzazione.

Tailor-made products. Maximum customization of the finishes has always been one of the main features of our collection. In fact, all products are available in multiple finishes of the wooden frames while the upholsteries can be made with different materials in terms of composition and colours.

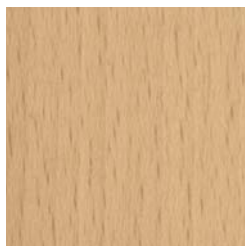
In this catalogue you will find a collection of carefully selected finishes and fabrics to offer the maximum customization level.

# Finiture legno \_ Wood finishes

## Faggio \_ Beech



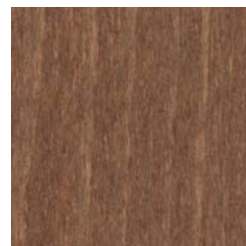
FSB000



FNT001



FRV002



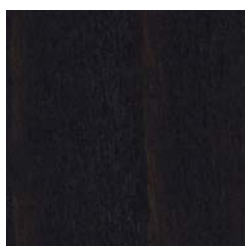
FNH003



FCN004



FFF005



FWN006



FGR007



FNR008



RAL/NCS  
su richiesta / on demand

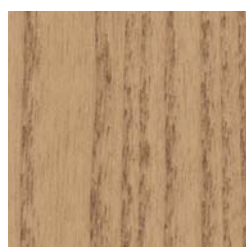
## Frassino \_ Ash



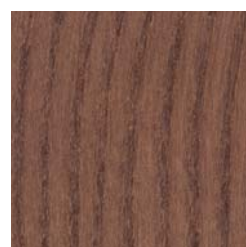
ASB100



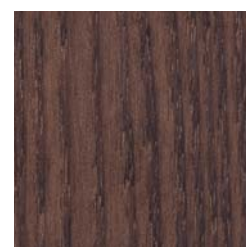
ANT101



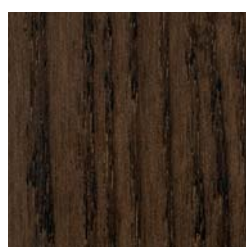
ARV102



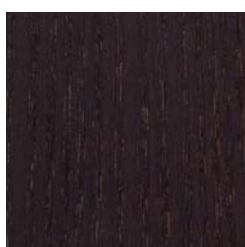
ANH103



ACN104



AFF105



AWN106



AGR107



ANR108



RAL/NCS  
su richiesta / on demand

# Reginarca

Cat. A

**Composizione/  
Composition**  
95% PES  
5% CO

**Abrasiono/Abrasion  
(Martindale)**  
50.000 cicli/cycles  
EN ISO 12947-2

**Pilling**  
4/5 EN ISO 12945-2  
**Solidità colori alla luce  
Colour fastness to light**  
4/5 EN ISO 105 B02

**Solidità colori allo sfregamento  
Colour fastness to rubbing**  
secco \_ dry: 4/5  
umido \_ wet: 3/4  
EN ISO 105 X12

**Water Repellent**



RGR 101



RGR 400



RGR 512



RGR 305



RGR 405



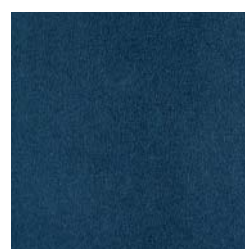
RGR 805



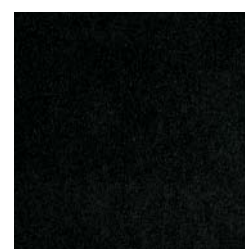
RGR 820



RGR 821



RGR 705



RGR 708

# Jet

Cat. A

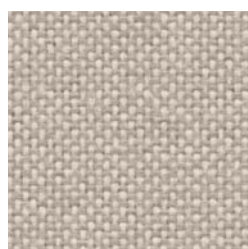
**Composizione/  
Composition**  
100% PES TRE

**Abrasiono/Abrasion  
(Martindale)**  
65.000 cicli/cycles  
EN ISO 12947-2

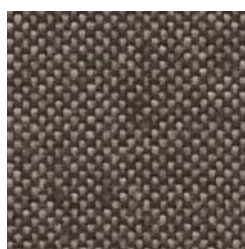
**Pilling**  
5 EN ISO 12945-2  
**Solidità colori alla luce  
Colour fastness to light**  
6 EN ISO 105 B02

**Solidità colori allo sfregamento  
Colour fastness to rubbing**  
secco \_ dry: 4/5  
umido \_ wet: 4/5  
EN ISO 105 X12

**Resistenza al fuoco/Flame Retardant**  
BS 5852 crib 5 • DIN 4102, B1 • EN 1021-1/2  
• IMO Part 8 Upholstery • NF D 60-013 • NFPA  
260, class 1 • NFPA 701 • ÖNORM A 3800-1  
• UNI 9175 Class 1 IM • US Cal. TB 117-2013



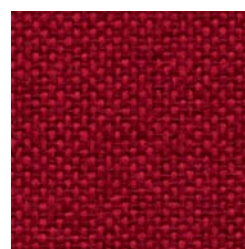
JET 9110



JET 9109



JET 9304



JET 9401



JET 9501



JET 9704



JET 9610



JET 9602



JET 9294



JET 8033



# Skill

Cat. A

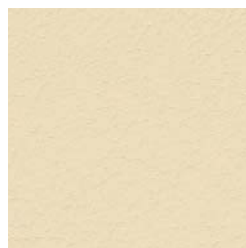
**Composizione/  
Composition**  
69% PVC  
30% CO/PES  
1% PU

**Abrasione/Abrasion  
(Martindale)**  
50.000 cicli/cycles  
EN ISO 5470-2

**Solidità colori alla luce  
Colour fastness to light**  
6/7 EN ISO 105 B02

**Solidità colori allo sfregamento  
Colour fastness to rubbing**  
secco \_ dry: 5  
umido \_ wet: 5  
EN ISO 105 X12

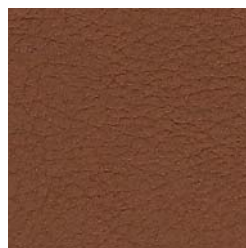
**Resistenza al fuoco/Flame Retardant**  
BS 5852-1 • EN 1021-1/2 • ÖNORM B 3825  
• UNI 9175 classe 1IM • US Cal. TB 117-2013



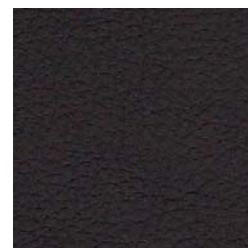
SKL 3



SKL 26



SKL 6



SKL 28



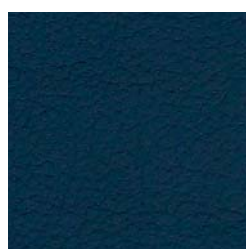
SKL 30



SKL 13



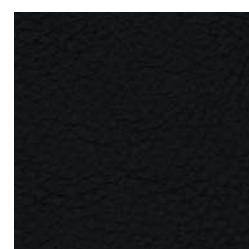
SKL 32



SKL 22



SKL 36



SKL 24

# Magnum

Cat. B

**Composizione/  
Composition**  
88% PVC  
7% PES  
4% CO  
1% PU

**Abrasione/Abrasion  
(Martindale)**  
> 200.000 cicli/cycles  
EN ISO 5470-2

**Solidità colori alla luce  
Colour fastness to light**  
> 7 EN ISO 105 B02

**Solidità colori allo sfregamento  
Colour fastness to rubbing**  
secco \_ dry: 5  
umido \_ wet: 5  
EN ISO 105 X12

**Resistenza al fuoco/Flame Retardant**  
BS 5852-1 • EN 1021-1/2 • IMO FTP Code  
2010 Part 8 • NF P 92 503-507, M3 • NFPA 260,  
class 1 • ÖNORM B 3825 • UNI 9175 Classe  
1IM • US Cal. TB 117-2013



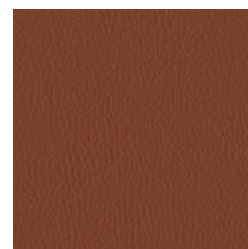
MGN 100



MGN 102



MGN 406



MGN 404



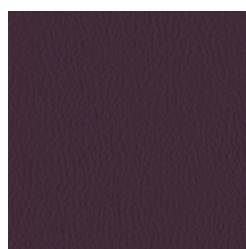
MGN 405



MGN 006



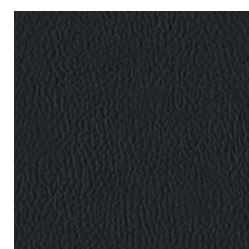
MGN 304



MGN 301



MGN 700



MGN 200

# Silvertex

Cat. B

**Composizione/  
Composition**

- VI  
- UR  
- PES

**Abrasione/Abrasion  
(Martindale)**

> 300.000 cicli/cycles  
EN ISO 12947-2

**Solidità colori alla luce  
Colour fastness to light**

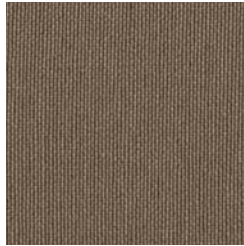
18 EN ISO 105 B02

**Resistenza al fuoco/Flame Retardant**

DIN 4102, B2 ▪ EN 1021-1/2 ▪ FMVSS 302 ▪ IMO FTP Code 2010 Part 8 ▪ NF P 92 503-507, M2 ▪ NFPA 260, class 1 ▪ ÖNORM B 3825 & A 3800-1 ▪ UNI 9175 Classe 1 IM ▪ US Cal. TB 117-2013



SIL 1077



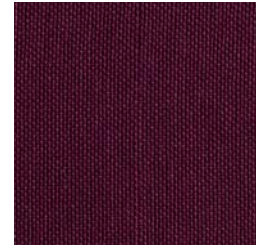
SIL 0009



SIL 2003



SIL 2011



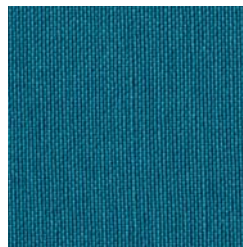
SIL 6004



SIL 4024



SIL 5020



SIL 3001



SIL 3007



SIL 9001

# Crazy

Cat. B

**Composizione/  
Composition**

80% PVC  
18% PES  
2% PU

**Abrasione/Abrasion  
(Martindale)**

50.000 cicli/cycles  
EN ISO 5470-2

**Solidità colori alla luce  
Colour fastness to light**

6 EN ISO 105 B02

**Solidità colori allo sfregamento  
Colour fastness to rubbing**

secco \_ dry: 4/5  
umido \_ wet: 4/5  
EN ISO 105 X12

**Resistenza al fuoco/Flame Retardant**

BS 5852-1 ▪ EN 1021-1/2 ▪ UNI 9175 classe 1IM



CRZ 1002



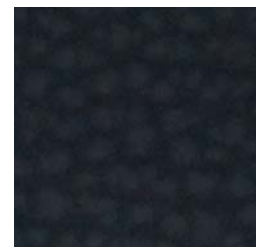
CRZ 1003



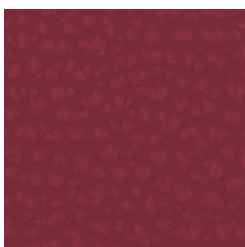
CRZ 1004



CRZ 1006



CRZ 1007



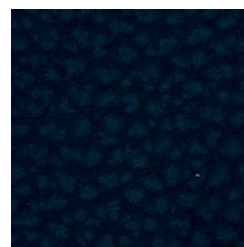
CRZ 1014



CRZ 1015



CRZ 1012



CRZ 1011



CRZ 1009



# Acton

Cat. B

**Composizione/  
Composition**  
87% REC PES  
13% PES

**Abrasiono/Abrasion  
(Martindale)**  
90.000 cicli/cycles  
EN ISO 12947-2

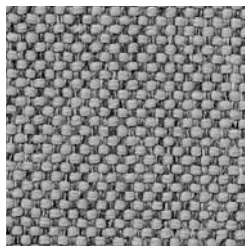
**Pilling**  
4 EN ISO 12945-2  
**Solidità colori alla luce  
Colour fastness to light**  
6 EN ISO 105 B02

**Solidità colori allo sfregamento  
Colour fastness to rubbing**  
secco \_ dry: 4/5  
umido \_ wet: 4/5  
EN ISO 105 X12

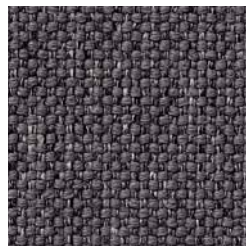
**Resistenza al fuoco/Flame Retardant**  
BS 5852 crib 5 ▪ DIN 4102, B1 ▪ EN 1021/ 1-2  
▪ IMO FTP Code 2010 Part 8 ▪ NF P 92 503-507,  
M1 ▪ NFPA 260, class 1 ▪ UNI 9175 Classe 1IM ▪  
US Cal. TB 117-2013



ACT 08



ACT 16



ACT 13



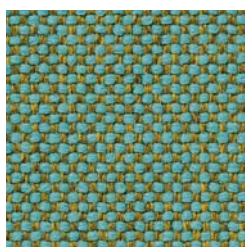
ACT 05



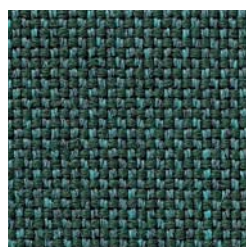
ACT 06



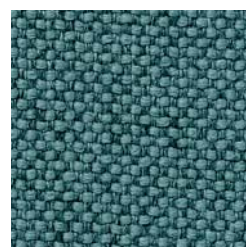
ACT 38



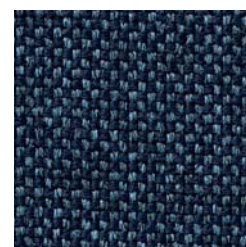
ACT 29



ACT 33



ACT 23



ACT 18

# Laser N

Cat. B

**Composizione/  
Composition**  
100% PES TRE

**Abrasiono/Abrasion  
(Martindale)**  
100.000 cicli/cycles  
EN ISO 12947-2

**Pilling**  
5 EN ISO 12945-2  
**Solidità colori alla luce  
Colour fastness to light**  
6 EN ISO 105 B02

**Solidità colori allo sfregamento  
Colour fastness to rubbing**  
secco \_ dry: 4/5  
umido \_ wet: 4/5  
EN ISO 105 X12

**Resistenza al fuoco/Flame Retardant**  
UNI 9175 Class 1 IM ▪ DIN 4102, B1 ▪  
NF D 60-013 ▪ EN 1021-1/2 ▪ BS 5852 crib 5  
▪ ÖNORM A 3800-1 ▪ US Cal. TB 117-2013 ▪  
NFPA 701 ▪ NFPA 260, class 1 ▪ IMO FTP Code  
2010 Part 8



LSN 1025



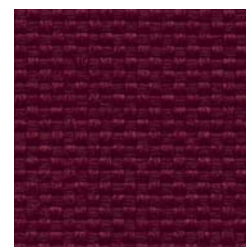
LSN 1030



LSN 3020



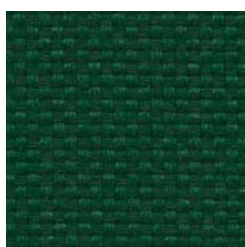
LSN 4027



LSN 4017



LSN 2017



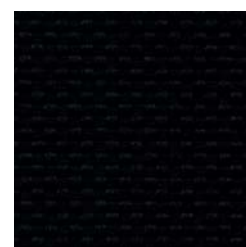
LSN 7036



LSN 6031



LSN 6017



LSN 8033

# Gorgeous Velvet

Cat. C

**Composizione/  
Composition**  
50% PES  
50% PES TRE

**Abrasione/Abrasion  
(Martindale)**  
100.000 cicli/cycles  
*EN ISO 12947-2*

**Pilling**  
5 *EN ISO 12945-2*  
**Solidità colori alla luce  
Colour fastness to light**  
>=5 *EN ISO 105 B02*

**Solidità colori allo sfregamento  
Colour fastness to rubbing**  
secco \_ dry: 4  
umido \_ wet: 4  
*EN ISO 105 X12*

**Resistenza al fuoco/Flame Retardant**  
BS 5852 crib 5 • DIN 4102, B1 • EN 1021-1/2 •  
IMO FTP Code 2010 Part 8 • NF P 92 503-507,  
M1 • UNI 9175 classe 1IM



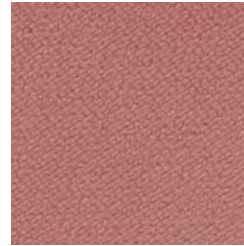
GRG 2103



GRG 2102



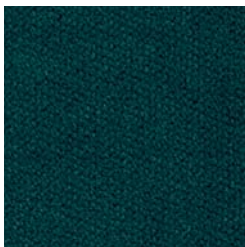
GRG 2108



GRG 2114



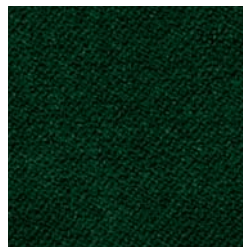
GRG 2118



GRG 2134



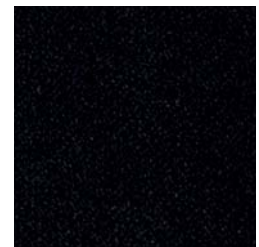
GRG 2128



GRG 2135



GRG 2150



GRG 2147

# Hot

Cat. C

**Composizione/  
Composition**  
100% PES

**Abrasione/Abrasion  
(Martindale)**  
45.000 cicli/cycles  
*EN ISO 12947-2*

**Pilling**  
4 *EN ISO 12945-2*  
**Solidità colori alla luce  
Colour fastness to light**  
4/5 *EN ISO 105 B02*

**Solidità colori allo sfregamento  
Colour fastness to rubbing**  
secco \_ dry: 4/5  
umido \_ wet: 4/5  
*EN ISO 105 X12*

**Resistenza al fuoco/Flame Retardant**  
BS 5852 crib 5 • DIN 4102, B1 • EN 1021-1/2 •  
IMO FTP Code 2010 Part 8 • NF P 92 503-507,  
M1 • UNI 9175 classe 1IM • US Cal. TB 117-  
2013



HOT 202



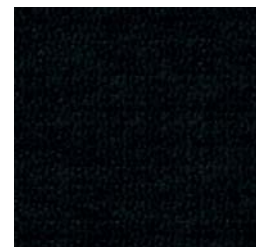
HOT 210



HOT 206



HOT 245



HOT 227



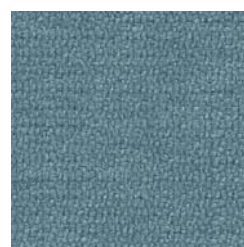
HOT 236



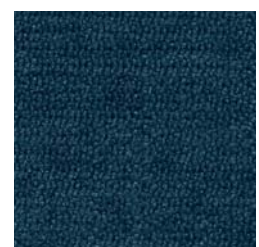
HOT 215



HOT 238



HOT 249



HOT 241



# Main Line Flax

Cat. C

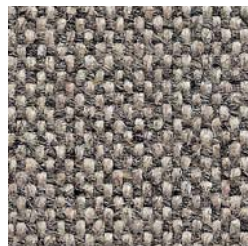
**Composizione/  
Composition**  
75% WV  
25% LI

**Abrasione/Abrasion  
(Martindale)**  
> 50.000 cicli/cycles

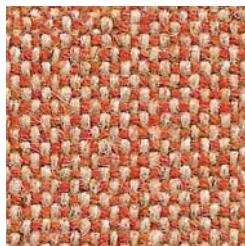
**Solidità colori alla luce  
Colour fastness to light**  
4/5 EN ISO 105 B02

**Solidità colori allo sfregamento  
Colour fastness to rubbing**  
secco \_ dry: 3  
umido \_ wet: 4  
EN ISO 105 X12

**Resistenza al fuoco/Flame Retardant**  
BS 5852 crib 5 • BS 7176 Low & Medium Hazard  
• EN 1021-1/2 • IMO FTP Code 2010 Part 8 •  
NF D 60-013 • ÖNORM B 3825 & A 3800-1 •  
UNI 9175 Classe 1 IM



MLF 02



MLF 08



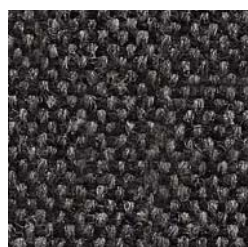
MLF 23



MLF 07



MLF 24



MLF 16



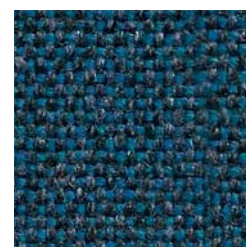
MLF 14



MLF 57



MLF 25



MLF 35

# Blazer

Cat. C

**Composizione/  
Composition**  
100% WV

**Abrasione/Abrasion  
(Martindale)**  
> 50.000 cicli/cycles

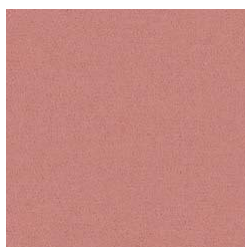
**Solidità colori alla luce  
Colour fastness to light**  
4/6 EN ISO 105 B02

**Solidità colori allo sfregamento  
Colour fastness to rubbing**  
secco \_ dry: 4  
umido \_ wet: 4  
EN ISO 105 X12

**Resistenza al fuoco/Flame Retardant**  
BS 7176 Low Hazard • EN 1021-1/2 •  
IMO FTP Code 2010 Part 8 • NF D 60-013 •  
ÖNORM B 3825 & A 3800-1 • UNI 9175 Classe  
1IM



CUZ 47



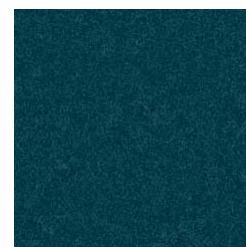
CUZ 4Q



CUZ 18



CUZ 26



CUZ 1P



CUZ 28



CUZ 82



CUZ 1K



CUZ 1W



CUZ 30



# Foster

Cat. C

**Composizione/  
Composition**  
97% REC PES  
3% PES

**Abrasione/Abrasion  
(Martindale)**  
60.000 cicli/cycles  
EN ISO 12947-2

**Pilling**  
4 EN ISO 12945-2  
**Solidità colori alla luce  
Colour fastness to light**  
6 EN ISO 105 B02

**Solidità colori allo sfregamento  
Colour fastness to rubbing**  
secco \_ dry: 4/5  
umido \_ wet: 4/5  
EN ISO 105 X12

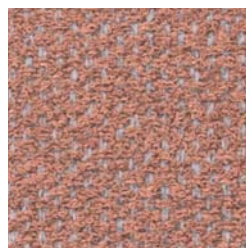
**Resistenza al fuoco/Flame Retardant**  
BS 5852 crib 5 ▪ DIN 4102, B1 ▪ EN 1021/1-2 ▪  
IMO FTP Code 2010 Part 8 ▪ NF P 92 503-507,  
M1 ▪ NFPA 260, class 1 ▪ UNI 9175 Classe 1IM ▪  
US Cal. TB 117-2013



FST 04



FST 15



FST 07



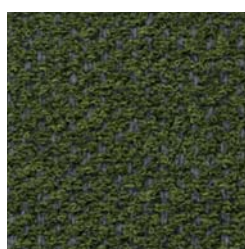
FST 19



FST 24



FST 16



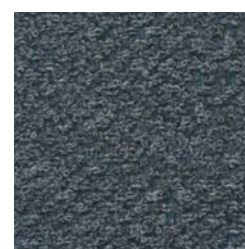
FST 21



FST 20



FST 17



FST 14

# Yoredale

Cat. D

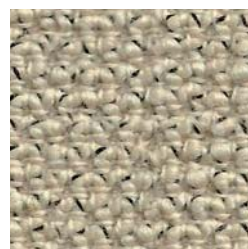
**Composizione/  
Composition**  
95% WO  
3% PES  
2% PA

**Abrasione/Abrasion  
(Martindale)**  
> 50.000 cicli/cycles

**Solidità colori alla luce  
Colour fastness to light**  
5 EN ISO 105 B02

**Solidità colori allo sfregamento  
Colour fastness to rubbing**  
secco \_ dry: 4  
umido \_ wet: 4  
EN ISO 105 X12

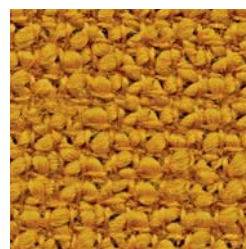
**Resistenza al fuoco/Flame Retardant**  
BS 7176 Low Hazard ▪ EN 1021-1/2 ▪  
ÖNORM B 3825 & A 3800-1 ▪ IMO FTP  
Code 2010 Part 8 ▪ UNI 9175 Classe 1IM



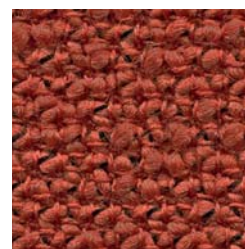
UDA 29



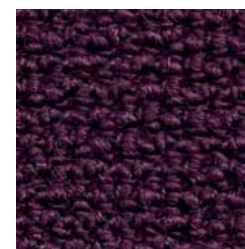
UDA 07



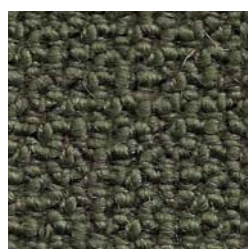
UDA 16



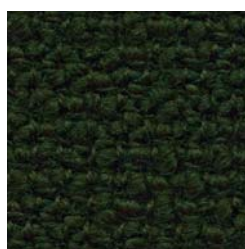
UDA 13



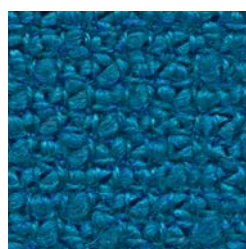
UDA 38



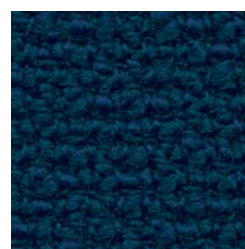
UDA 28



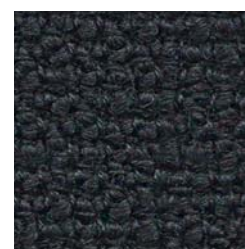
UDA 08



UDA 20



UDA 17



UDA 25



# Canvas

Cat. D

**Composizione/  
Composition**  
90% WW  
10% PA

**Abrasione/Abrasion  
(Martindale)**  
100.000 cicli/cycles  
*EN ISO 12947-2*

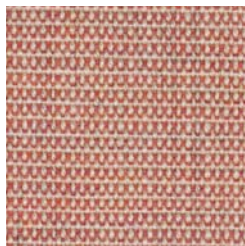
**Pilling**  
4 *EN ISO 12945-2*  
**Solidità colori alla luce  
Colour fastness to light**  
5/6 *EN ISO 105 B02*

**Solidità colori allo sfregamento  
Colour fastness to rubbing**  
secco \_ dry: 4/5  
umido \_ wet: 4/5  
*EN ISO 105 X12*

**Resistenza al fuoco/Flame Retardant**  
AS/NZS 1530.3 ▪ BS 5852-1 ▪ EN 1021-1/2  
▪ IMO FTP Code 2010 Part 8 ▪ NF D 60-013 ▪  
NFFPA 260, class 1 ▪ ÖNORM B1/Q1 ▪ UNI 9175  
11M ▪ US Cal. TB 117-2013



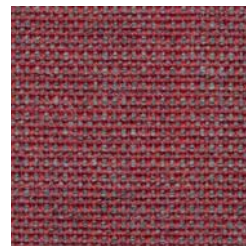
CNV 244



CNV 614



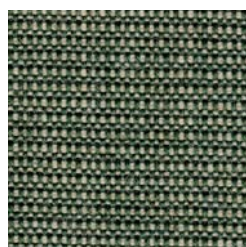
CNV 644



CNV 654



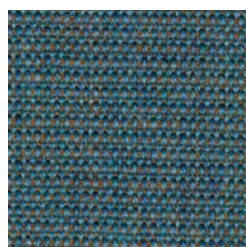
CNV 674



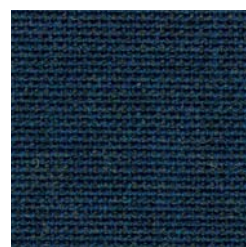
CNV 926



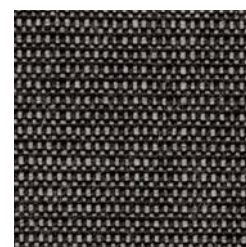
CNV 996



CNV 734



CNV 794



CNV 154

# Remix

Cat. D

**Composizione/  
Composition**  
90% WW  
10% PA

**Abrasione/Abrasion  
(Martindale)**  
100.000 cicli/cycles  
*EN ISO 12947-2*

**Pilling**  
4 *EN ISO 12945-2*  
**Solidità colori alla luce  
Colour fastness to light**  
6 *EN ISO 105 B02*

**Solidità colori allo sfregamento  
Colour fastness to rubbing**  
secco \_ dry: 4  
umido \_ wet: 4  
*EN ISO 105 X12*

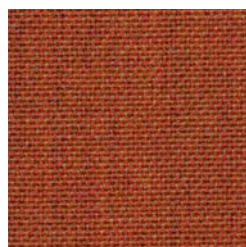
**Resistenza al fuoco/Flame Retardant**  
AS/NZS 1530.3 ▪ AS/NZS 3837 class 2 ▪  
BS 5852-1 ▪ EN 1021-1/2 ▪ IMO FTP Code  
2010 Part 8 ▪ NF D 60-013 ▪ NFFPA 260, class  
1 ▪ ÖNORM B1/Q1 ▪ UNI 9175 11M ▪ US Cal.  
TB 117-2013



RMX 252



RMX 422



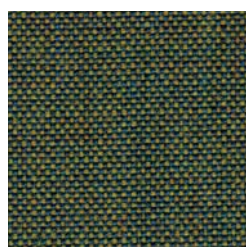
RMX 443



RMX 653



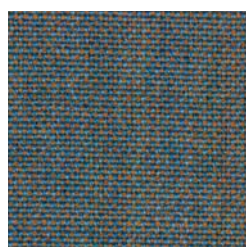
RMX 692



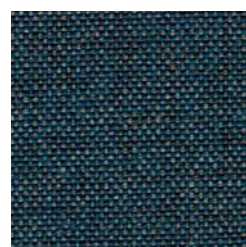
RMX 842



RMX 954



RMX 722



RMX 753



RMX 362



# Steelcut Trio

Cat. E

**Composizione/  
Composition**  
90% WW  
10% PA

**Abrasione/Abrasion  
(Martindale)**  
100.000 cicli/cycles  
EN ISO 12947-2

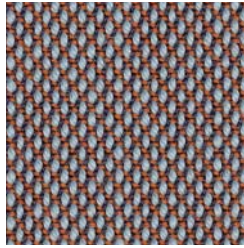
**Pilling**  
4 EN ISO 12945-2  
**Solidità colori alla luce  
Colour fastness to light**  
6/7 EN ISO 105 B02

**Solidità colori allo sfregamento  
Colour fastness to rubbing**  
secco \_ dry: 4/5  
umido \_ wet: 4/5  
EN ISO 105 X12

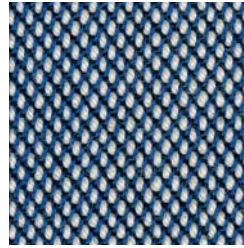
**Resistenza al fuoco/Flame Retardant**  
AS/NZS 1530.3 ▪ AS/NZS 3837 class 2 ▪  
BS 5852-1 ▪ EN 1021-1/2 ▪ IMO FTP Code  
2010 Part 8 ▪ NF D 60-013 ▪ NFPA 260, class  
1 ▪ ÖNORM B1/Q1 ▪ UNI 9175 1IM ▪ US Cal.  
TB 117-2013



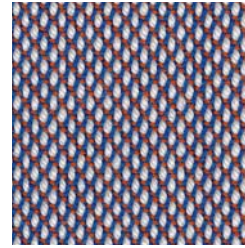
STT 105



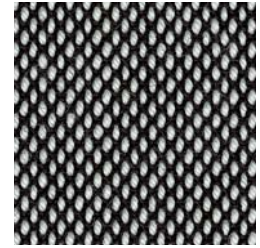
STT 416



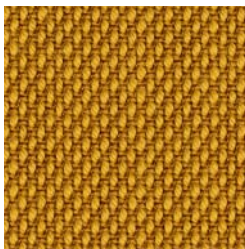
STT 716



STT 806



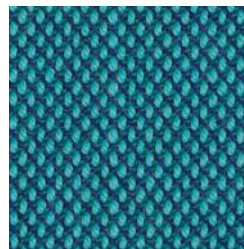
STT 124



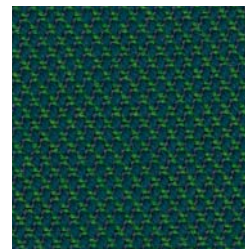
STT 453



STT 666



STT 983



STT 976



STT 796

# Patio Outdoor

Cat. E

**Composizione/  
Composition**  
100% PES TRE

**Abrasione/Abrasion  
(Martindale)**  
50.000 cicli/cycles  
EN ISO 12947-2

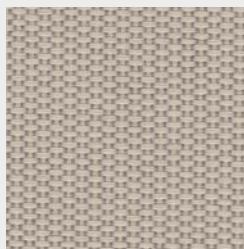
**Pilling**  
4/5 EN ISO 12945-2  
**Solidità colori alla luce  
Colour fastness to light**  
7 EN ISO 105 B02

**Solidità colori allo sfregamento  
Colour fastness to rubbing**  
secco \_ dry: 4/5  
umido \_ wet: 4/5  
EN ISO 105 X12

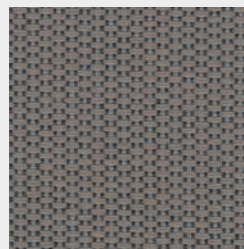
**Resistenza al fuoco/Flame Retardant**  
AS/NZS 1530.3 ▪ AS/NZS 3837 class 1 ▪  
BS 5852 Crib 5 ▪ DIN 4102, B1 ▪ EN 1021-1/2 ▪  
IMO FTP Code 2010 Part 8 ▪ NF D 60-013 ▪ NF  
P 92 503-507, M1 ▪ NFPA 701 ▪ ÖNORM B1/Q1  
▪ UNI 9175 Classe 1IM ▪ US Cal. TB 117-2013



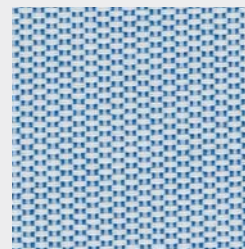
PTO 200



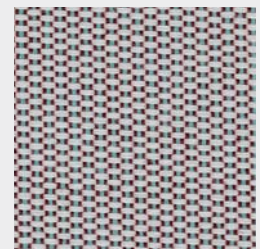
PTO 210



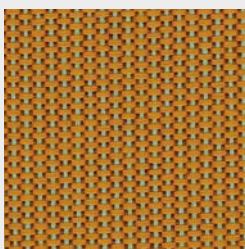
PTO 150



PTO 730



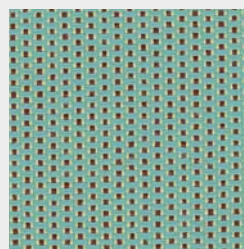
PTO 220



PTO 450



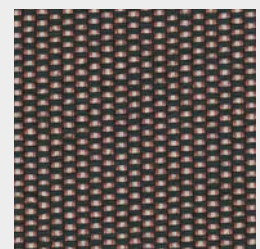
PTO 570



PTO 840



PTO 780



PTO 370



# Galileo

Cat. P

**Composizione/  
Composition**  
100% BL

**Resistenza alle  
flessioni /  
Flexing endurance**  
> 50.000 cicli/cycles  
*EN ISO 5402-1*

**Solidità colori alla luce  
Colour fastness to light**  
> 4/5 *EN ISO 105 B02*

**Solidità colori allo sfregamento  
Colour fastness to rubbing**  
secco \_ dry: 1000 cicli/cycles  
umido \_ wet: 200 cicli/cycles  
*EN ISO 105 X12*

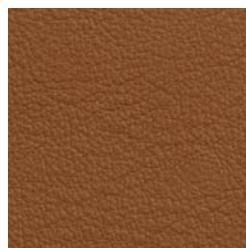
**Resistenza al fuoco/Flame Retardant**  
BS 5852 crib 0, crib 1 ▪ FMVSS 302 ▪  
IMO FTP Code 2010 Part 7,2-7,3 ▪  
US Cal. TB 117-2013



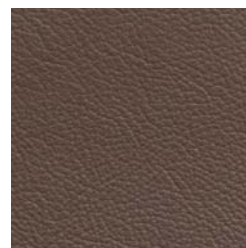
GAL 4



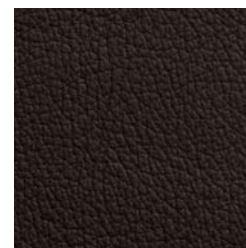
GAL 55



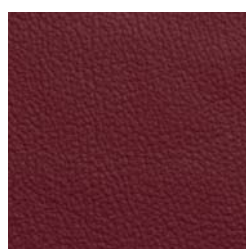
GAL 60



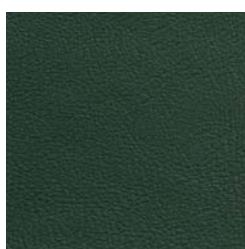
GAL 18



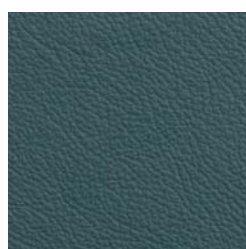
GAL 20



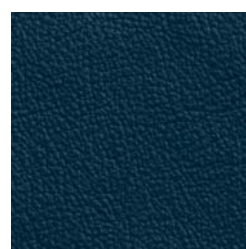
GAL 40



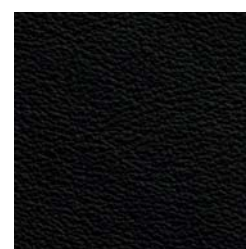
GAL 34



GAL 52



GAL 30



GAL 32

# Anticato

Cat. P

**Composizione/  
Composition**  
100% BL

**Resistenza alle  
flessioni /  
Flexing endurance**  
50.000 cicli/cycles  
*EN ISO 5402-1*

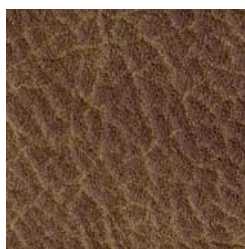
**Solidità colori alla luce  
Colour fastness to light**  
> 7 *EN ISO 105 B02*

**Solidità colori allo sfregamento  
Colour fastness to rubbing**  
secco \_ dry: 800 cicli/cycles  
umido \_ wet: 150 cicli/cycles  
*EN ISO 105 X12*

**Resistenza al fuoco/Flame Retardant**  
EN 1021-1/2



NTC 6500



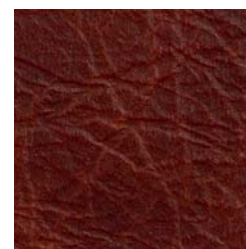
NTC 6510



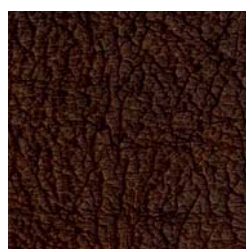
NTC 6520



NTC 6530



NTC 6540



NTC 6560



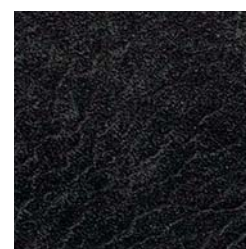
NTC 6590



NTC 6620



NTC 6600

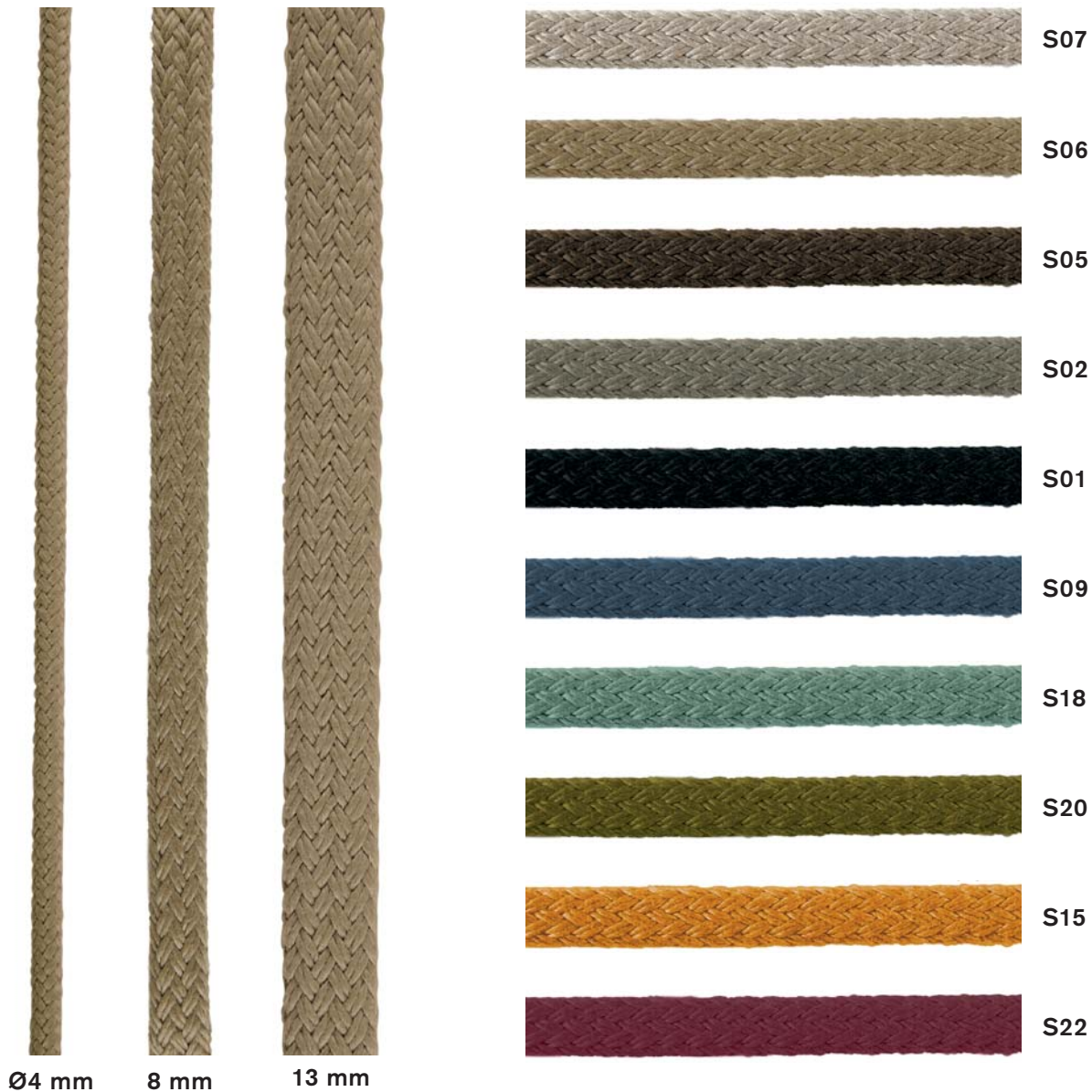


NTC 6610

# Cordino di carta \_ Papercord



# Corde poliestere \_ Polyester ropes





# Info

## Composizione / Composition

<b>BL</b>	Pelle Bovina / Bovine Leather
<b>CO</b>	Cotone / Cotton
<b>LI</b>	Lino / Flax
<b>PA</b>	Poliamidica / Nylon
<b>PES</b>	Poliestere / Polyester
<b>PES REC</b>	Poliestere Riciclato / Recycled Polyester
<b>PES TRE</b>	Poliestere Trevira CS / Polyester Trevira CS
<b>PU</b>	Poliuretano / Polyurethane
<b>PVC</b>	Polivinilcloruro / Polyvinyl Chloride
<b>UR</b>	Uretano / Urethane
<b>VI</b>	Vinile / Vinyl
<b>WO</b>	Lana / Wool
<b>WV</b>	Lana Vergine / Virgin Wool
<b>WW</b>	Lana Vergine, Filato Pettinato / New Wool, Worsted

Per conoscere in modo più approfondito i dati tecnici relativi ai materiali e per scoprire le nostre collezioni vi invitiamo a visitare il nostro sito [www.cizetagroup.it](http://www.cizetagroup.it)

To receive more detailed information concerning the materials and to discover our collections we invite you to visit our website [www.cizetagroup.it](http://www.cizetagroup.it)

I colori reali possono variare rispetto ai riferimenti cromatici forniti a causa delle inevitabili differenze tra i materiali utilizzati e la riproduzione tipografica. I colori dei tessuti pubblicati in questo catalogo sono indicativi e possono subire delle variazioni. Cizeta s.r.l. si riserva la facoltà di apportare modifiche in qualsiasi momento e senza preavviso.

Actual colours can be different than those indicated in the finishes section due to the inevitable differences between the materials used and the typographical reproduction. The colours of the fabrics published in this catalogue are indicative and may vary. Cizeta s.r.l. reserves the right to make changes at any time and without any previous notice.

Printing  
Grafiche Manzanese

Ed. Aprile 2024  
Copyright © 2024  
by Cizeta Srl

Made and printed in Italy

Cizeta s.r.l.  
Via Grava Lunga, 4  
33048 San Giovanni al Natisone (UD)  
Italy

T: +39 0432 758667  
E: [info@cizetagroup.it](mailto:info@cizetagroup.it)

[www.cizetagroup.it](http://www.cizetagroup.it)

Cizeta s.r.l.  
Via Grava Lunga, 4  
33048 San Giovanni al Natisone  
Udine, Italy

T: +39 0432 758667  
E: [info@cizetagroup.it](mailto:info@cizetagroup.it)

[www.cizetagroup.it](http://www.cizetagroup.it)